

Follow these steps to connect the library's wireless network:

Settings for Public wireless at HCPL Libraries.

- **SSID (network name) = hcpl**
- **Network Authentication: Open**
- **WEP = disable WEP encryption**

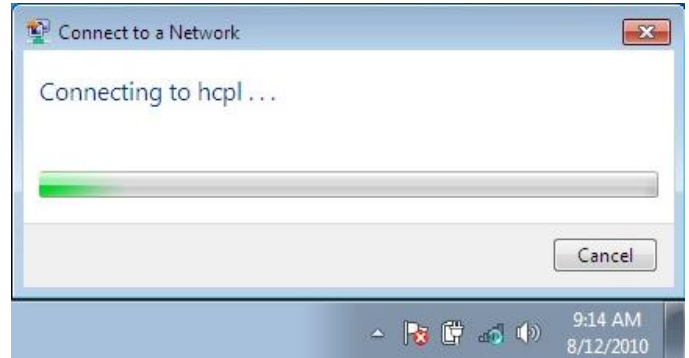
Click on **Wireless Icon in the System Tray**



Once the selection for available networks appears, select **hcpl** and click the Connect button



The computer will then connect.



Once it has Open the browser window.



Your regular homepage will not appear, rather the login screen for our wireless network.

Type in the listed username and password to access the Internet.



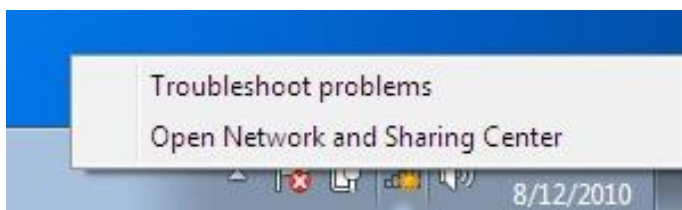
Once you have done so, you will be re-directed to your homepage.

Please return to a staff member when done

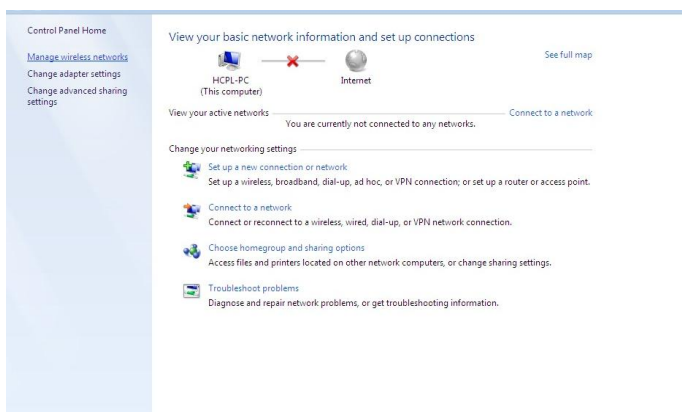
(Information on other side)

If you cannot connect using the above method, you can manually add the network:

Right click the Wireless icon in the bottom right System Tray and select Open Network and Sharing Center.

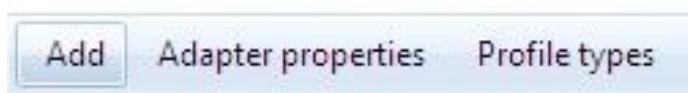


The following screen will appear:

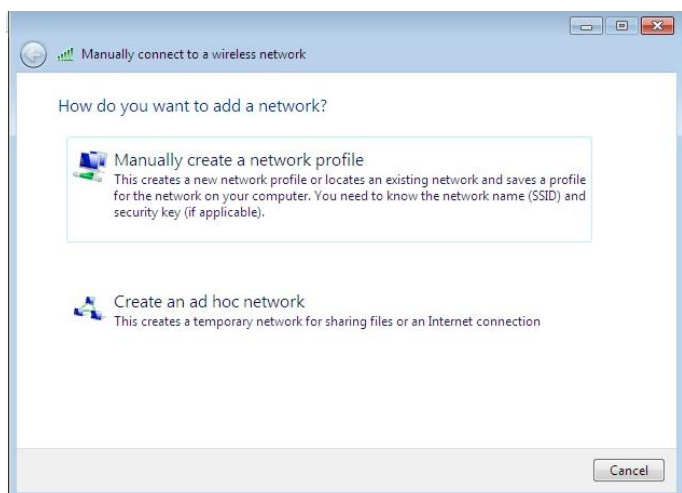


Select Manage wireless networks on the top left side.

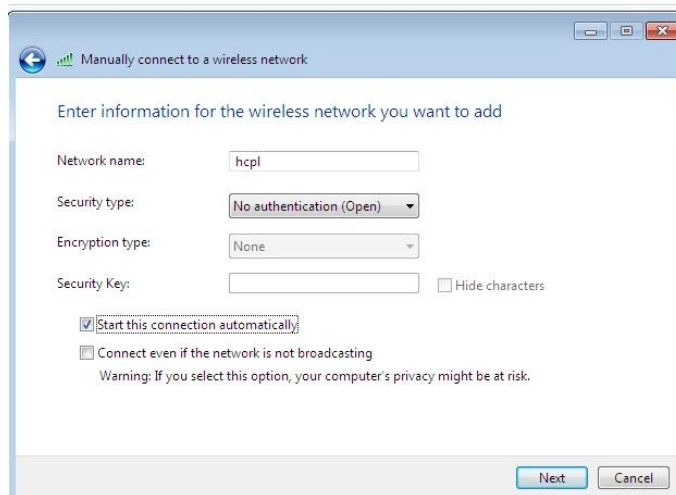
On the following screen, select the Add button to open the Manually connect to a wireless network screen.



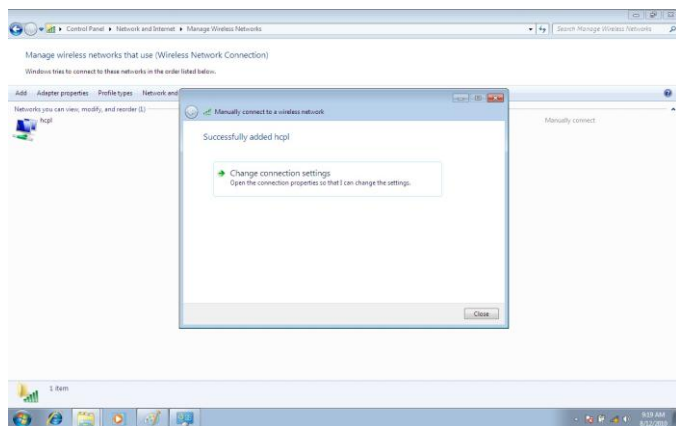
Select Manually create a network profile



- Network name: hcpl
- Security type: No authentication (Open)
- Encryption type: None
- Check off Start this connection automatically
- Leave Connect even if the network is not broadcasting unchecked.



Click next, and the following screen will appear:



Click Close

You should automatically connect and then can open a browser to authenticate as instructed above.

HCPL is not responsible for any network information lost that was previously saved to the machine.

It is the user's responsibility to backup any information related to other network connections on their machine.

Troubleshooting and Hints:

- If you're using a **wireless software**, (such as Intel Pro-set Wireless, etc), do the following:
 - 1 Have it scan for networks being broadcasted, then connect to "hctl"
OR
 - 2 Create a new wireless connection in this software, using "hctl" as the SSID, following the settings outlines on the top of the first page
OR
 - 3 Disable this software and use Windows for your wireless connection, (which is what these instructions go off of)
- If you have a **secured wireless network** at home or work set to automatically connect, make note of your security settings and disconnect this network. Scan for other networks, (hctl), and connect as instructed above. When you connect back at home or work, reconnect to your secure network.
- You may have to disable any **pop-up blockers**
- If you have a **Personal Firewall** (Symantec, Zone Alarm, BlackIce, even Windows), these will usually block open wireless networks. You may have to disable this.
- Make note of any **Static IP Settings** on your wireless interface and remove them.
- If you use **Proxy Servers** for school or work, make sure to remove these settings. (MAKE NOTE OF THEM BEFORE REMOVING THEM, SINCE YOU WILL HAVE TO REAPPLY THEM LATER!) If you have the **Automatically Detect Settings** option checked, make sure it is **NOT** checked.
- If you are using Dial-Up at home, make sure you select **Never Dial a Connection** before connecting to the wireless network. When you go back to your dial up connection, change the setting back to **Always Dial My Default Connection**.