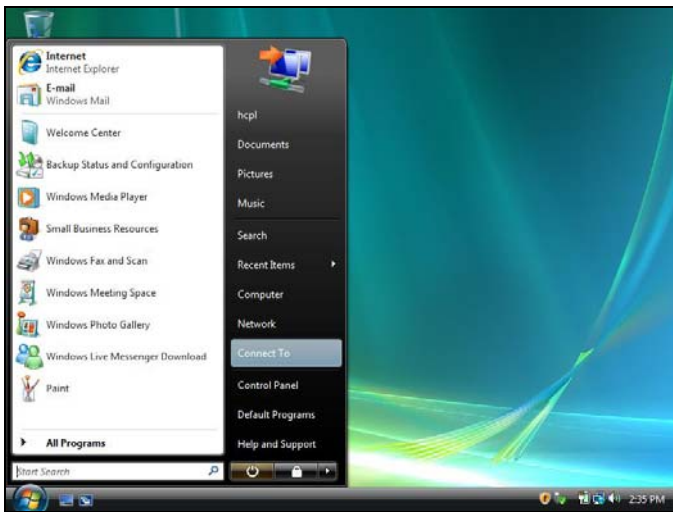


Follow these steps to connect the library's wireless network:

Settings for Public wireless at HCPL Libraries.

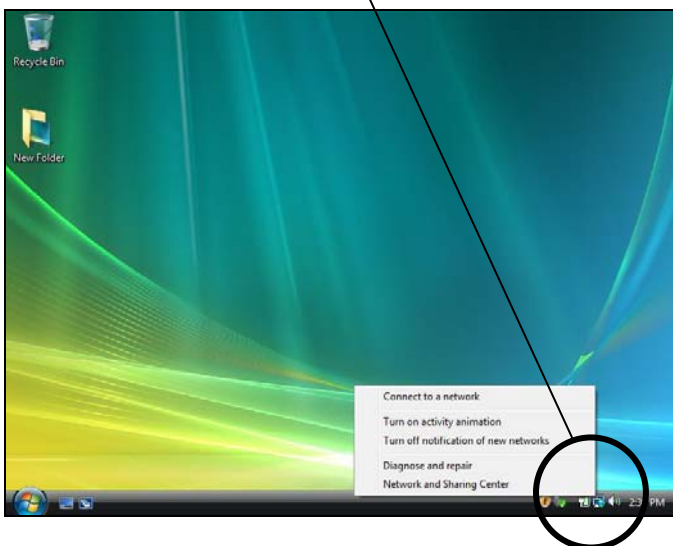
- **SSID (network name) = default or hcpl**
- **WEP = disable WEP encryption**
- **Mode or Network Type = Infrastructure mode or access point**

Click on **Start [Windows Logo], Connect To**

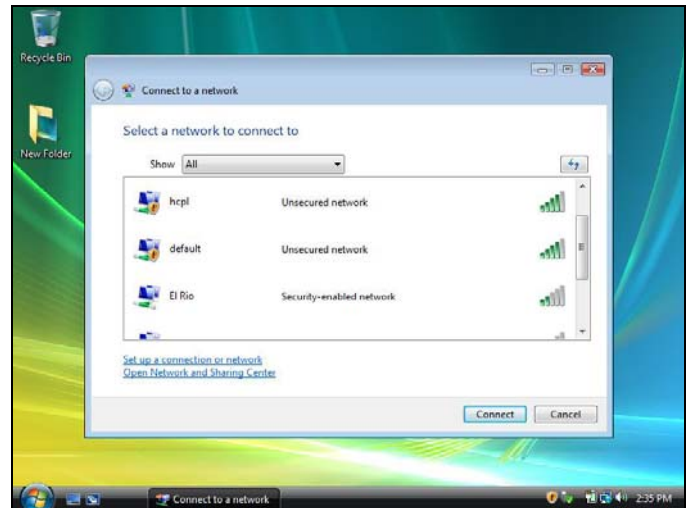


OR

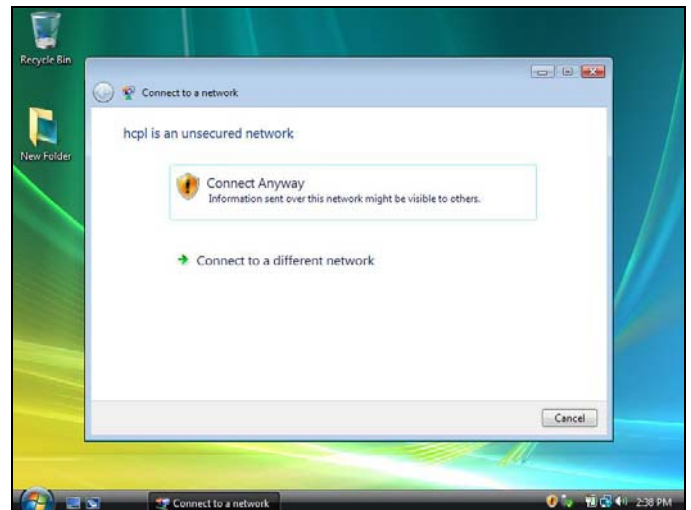
Right click the Network Icon in the bottom right System Tray and select **Connect to a Network**



Once the selection for available networks appears, click either **default** or **hcpl** and click the Connect button

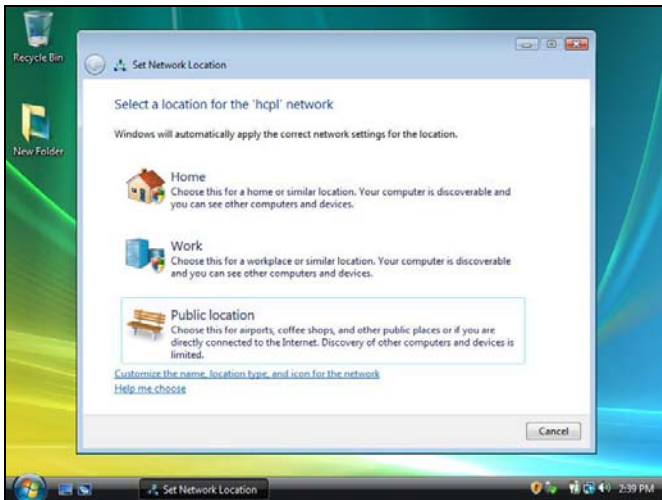


The computer may warn about the selected network being unsecured, click on **Connect Anyway**

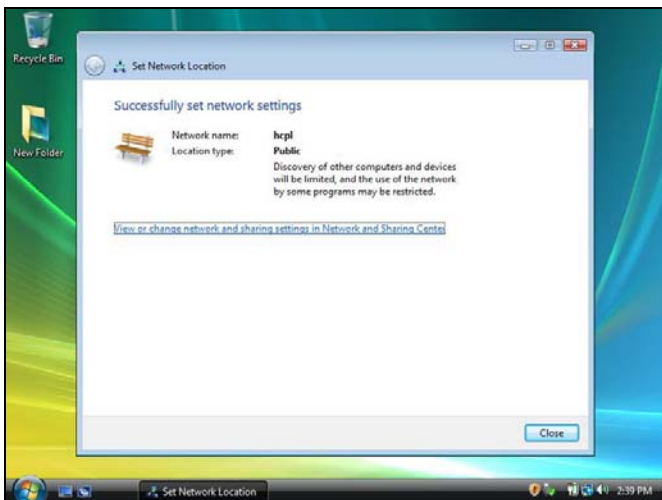


Once you've connected you are given the option to "Save this network" You can save it so you don't have to do these steps again in the future, or you can bypass this and Close the window

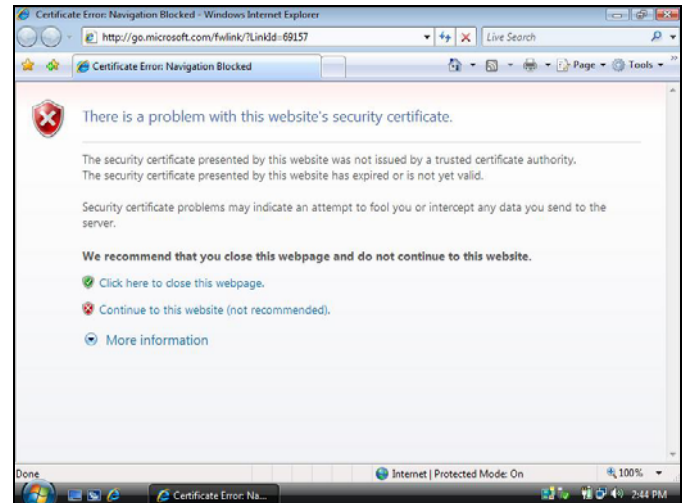
If a windows pops up asking for a Network Location, select "Public Location" Otherwise skip this and the next step



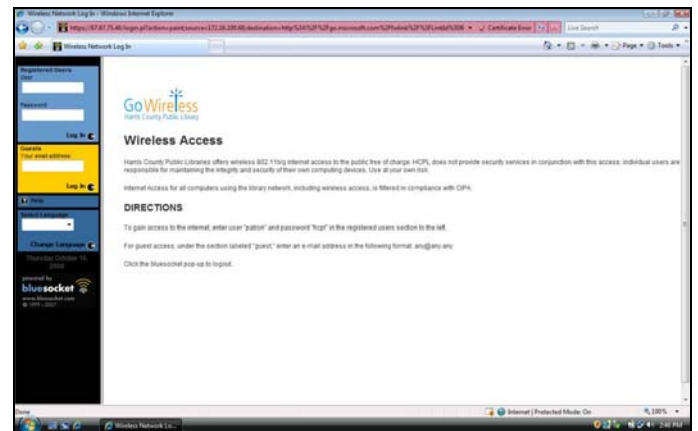
When the next screen comes up, click Close



Open your browser and the following Certificate Error will appear, Click the second selection "Continue..."



When the following Log in screen comes up, follow the instructions to connect to the Internet



Troubleshooting and Hints:

- If you're using a **wireless software**, (such as Intel Pro-set Wireless, etc), do the following:
 - 1 Have it scan for networks being broadcasted, then connect to "default" or "hrcpl" OR
 - 2 Create a new wireless connection in this software, using "default" or "hrcpl" as the SSID, following the settings outlines on the top of the first page OR
 - 3 Disable this software and use Windows for your wireless connection, (which is what these instructions go off of)
- If you have a **secured wireless network** at home or work set to automatically connect, make note of your security settings and disconnect this network. Scan for other networks, (hrcpl or default), and connect to either of these as instructed above. When you connect back at home or work, reconnect to your secure network.
- You may have to disable any **pop-up blockers**
- If you have a **Personal Firewall** (Symantec, Zone Alarm, BlackIce, even Windows), these will usually block open wireless networks. You may have to disable this.
- Make note of any **Static IP Settings** on your wireless interface and remove them.
- If you use **Proxy Servers** for school or work, make sure to remove these settings. (MAKE NOTE OF THEM BEFORE REMOVING THEM, SINCE YOU WILL HAVE TO REAPPLY THEM LATER!) If you have the **Automatically Detect Settings** option checked, make sure it is **NOT** checked.
- If you are using Dial-Up at home, make sure you select **Never Dial a Connection** before connecting to the wireless network. When you go back to your dial up connection, change the setting back to **Always Dial My Default Connection**.

Please return to a staff member when done

(Continued on other side)