

Using a Cricut with Harris County Public Library

How does the Cricut machine work?

There are a variety of Cricut (“cricket”) machines available throughout Harris County Public Library branches. Cricut machines are computer-controlled machines that can cut intricate line-art images with a fine blade. A Cricut is a very precise machine that allows for accurate results whether the design is large or small. A variety of materials can be fed through and cut by the machines, such as vinyl, paper, fabric, and more. Heat Press machines are also available at select locations and can be used to apply iron-on materials such as Heat Transfer Vinyl and Cricut infusible ink.

Customers are expected to provide their own materials to be cut, as well as transfer tape/application material.

What materials can I use?

Paper	Adhesive Vinyl	Iron-On paper
Cardstock	Vellum	Felt
Heat Transfer Vinyl	Photo paper	Fabric
Sticker paper	Thin plastic	Wood veneer

Cricut machine capabilities vary based on the different blade types available at each location. Contact your branch for specific material needs. Materials and projects are subject to staff approval.

What software is used to create artwork and designs?

Software varies by machine type. All Cricut machines use Cricut Design Space. This software is free to download, and customers are encouraged to create their designs in Cricut Design Space before their scheduled appointment. Cricut Design Space has a variety of templates, shapes, and design tools to create your files within the software, or you can upload your own images and vector files.

Vector files types (AI, SVG, EPS, DXF, etc.) can be created and modified using [Inkscape](#) (free), or Adobe Illustrator and CorelDRAW are popular commercial programs used to create vector art. Vector files can then be uploaded into Cricut Design Space to be cut out. It is recommended that your vector files are prepared in advance before your reservation, and then can be uploaded quickly.

How can I use a Cricut or Vinyl Cutter at a HCPL branch library?

Customers who wish to use one of the library machines are expected attend a free orientation class (check the Events Calendar for dates and times) and earn a “Cricut Badge” created on HCPL’s Beanstack site for the machine you wish to use. The orientation class covers the basic operation of a Cricut, the tools, and techniques to create the artwork files and HCPL’s Machine Policy. After earning the badge, customers may reserve time to use that machines. If you have already earned a badge for a different Cricut model than the one you wish to use you will earn a new badge during the hands-on portion of your orientation/reservation for the different model.

I have taken the orientation class – now what?

Schedule time to use a Cricut at HCPL by simply visiting the [Maker Central](#) page and accessing (or creating) your Beanstack account. (This may be the same account you have used for HCPL's Summer Reading Program or other activities.) Signup and attend the Cricut orientation to earn your badge and click on "Rewards" within Beanstack to access the reservation form. Complete the reservation form and you will receive a confirmation of your schedule request after staff review.

If you have any questions, [please contact the branch library for assistance](#).

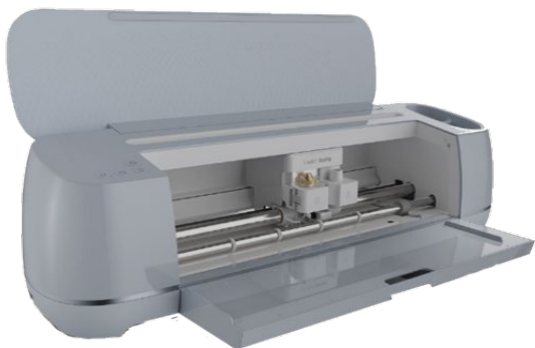
Which HCPL branches have machines available for customer use?

Cricut Maker



- Max Cutting Area: 24" x 12" (610 x 305 m)
- Design Software: Cricut Design Space
- Blade Types: Fine-Point blade, Scoring stylus, Markers, Knife Blade, debossing, wavy, perforation, engraving, rotary blade

Available at: HCPL Administration, Northwest Branch Library, Evelyn Meador Branch Library



Cricut Maker 3

- Max Cutting Area: 24"x 12" (up to 141" x 12" with roll holder attachment)
- Design Software: Cricut Design Space
- Blade Types: 13 different tools including the standard Fine-point blade, knife blade and rotary blade

Available at: Clear Lake City County-Freeman Branch Library



Cricut Explore Air 2

- Max Cutting Area: 24" x 12" (610 x 305 m)
- Design Software: Cricut Design Space
- Blade Types: Fine-Point blade, Scoring stylus, Markers

Available at: HCPL Administration, Barbara Bush Cypress Creek Library, High Meadows Library, Katy Branch Library, Maud Marks Library, Parker Williams Library, Tomball Branch Library



Cricut Easy Press 12x10" Heat Press

- Max Temperature: 400°F (205°C)
- Ideal for: T-shirts, sweatshirts, banners, blankets, and more

Available at: HCPL Administration, Maud Marks Branch Library



Super Deal 15x15" Digital Heat Press

- Max Temperature: 392°F (200°C)
- Ideal for: T-shirts, sweatshirts, banners, blankets, and more

Available at: Clear Lake City County Library-Freeman Branch



F2C Digital Combo Heat Press

- Max Temperature: 400°F (205°C)
- Ideal for: T-shirts, sweatshirts, banners, blankets, and more

Available at: Tomball Branch Library



US Cutter 5-in-1 Mug Press

- Max Temperature: 437°F (225°C)
- Ideal for: 6-15 oz mugs

Available at: HCPL Administration